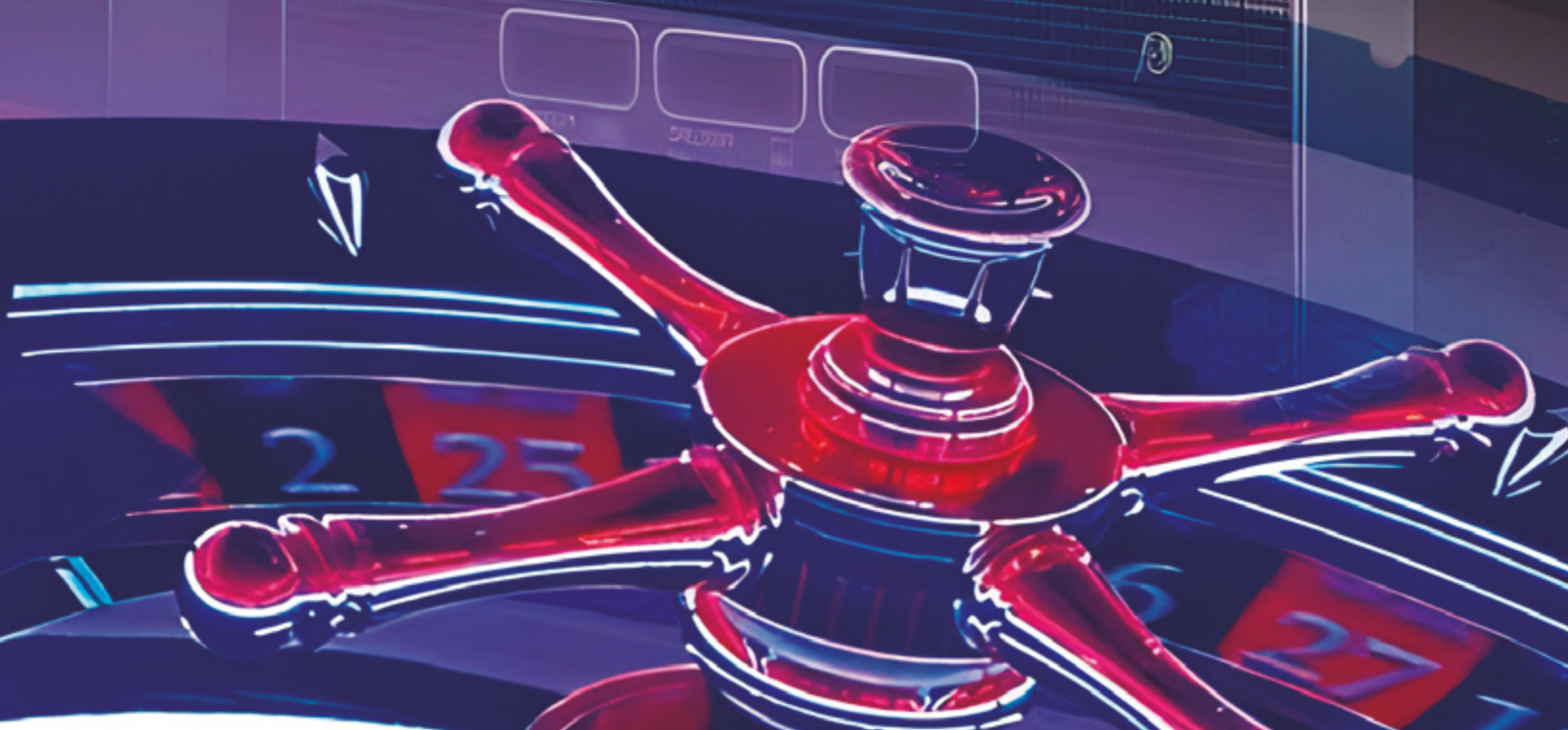




BROCHURE 2024



Index

COMPANY

06

BLACK JACK

40

10

LANDBASE
MARKET

46

ATILA GOLD

CHANGE MACHINE

12

ONLINE
MARKET

54

18

JACKPOT
CONTROLLER SYSTEM

56

SLOTME

READY 2B

24

MEMONEY

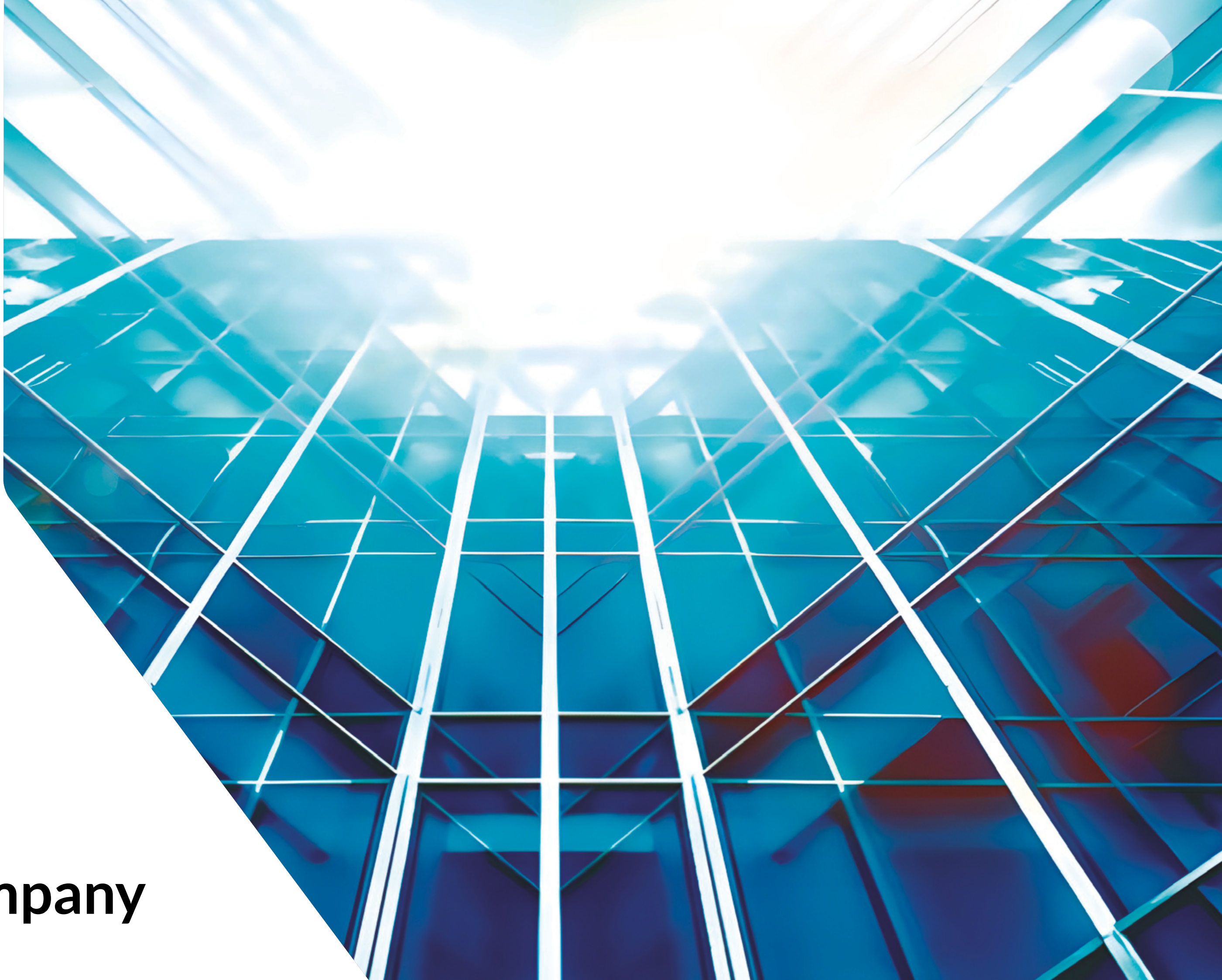
62

30

ELECTRONIC
ROULETTE

68

WEB
REPORTING



Company

SMI2000

In June 2007, SMI2000 was born with the objective of developing integral projects for the automation sector in general, focused on the development and manufacturing of gaming machines for the gaming industry, and equipment with payment systems.

Our engineering and development teams, software and hardware, turn our customers' ideas into reality using our own state-of-the-art technology, achieving a product with a cutting-edge design that meets the highest quality standards and a turnkey solution.

A know-how in constant development of new projects that covers the entire sector, with interconnection systems worldwide, making us a designer, developer, manufacturer and supplier of the most innovative and profitable gaming machines in the market.



MISSION. Creative by nature

Our main mission is to manufacture and develop products with the highest technology and quality standards, combining innovation and an excellent level of service for our clients, offering global solutions that allow them to improve the development of their business and economically profitable.



VISION. Always on the vanguard

We are a team that is always at the forefront. Developing new technologies, innovating and looking for new business opportunities, becoming a benchmark among manufacturers of recreational machines in the industry.



VALUES. Passion, Commitment and Spirit

The passion with which we work, the commitment we assume in each project presented, and the team spirit that runs in our veins... We make it and make it happen.

Landbase Market

CHANGE MACHINE

JACKPOT CONTROLLER SYSTEM

READY 2B

ELECTRONIC ROULETTE

BLACKJACK

ATILA GOLD



CHANGE MACHINE

CHANGE MACHINE

Design

Aesthetic and refined design. Maintaining an [aesthetic line suitable for Casinos](#) and high-level game rooms that stand out for their elegance and avant-garde decoration.

Reference team for [secure cash management](#).

With features that allow this product to be the [manager of all the cash](#) that circulates in the establishments and gaming halls.

Exterior

Stylish equipment with an aesthetic aligned with [the most avant-garde trends in the sector](#).

[27" screen](#) arranged vertically for a better view of the different operations that you want to perform.

A [highly elegant methacrylate coating](#) that raises its category to the highest level.

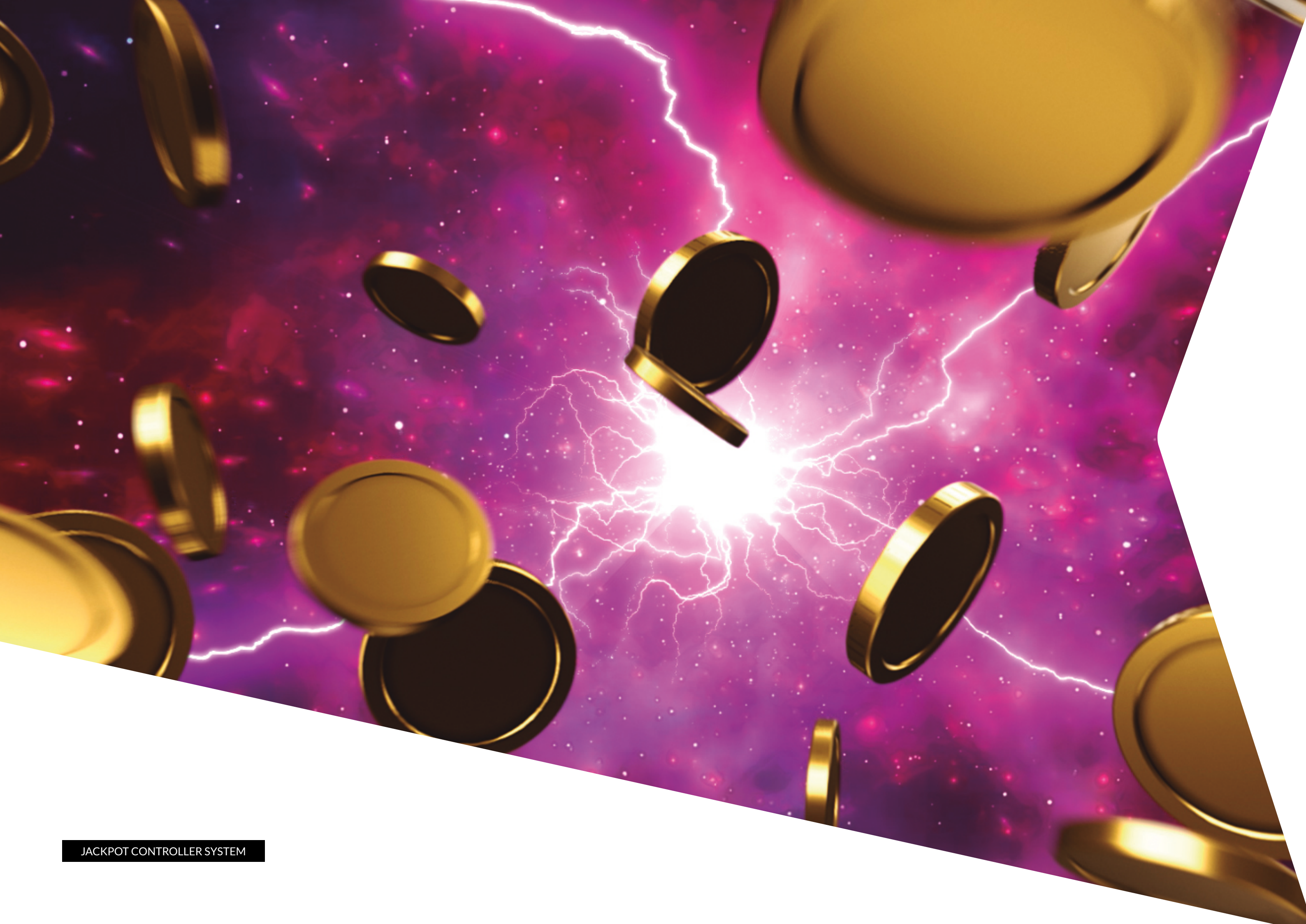
[100% Customizable](#) - Both the screen and its lower part can be customized with the colors and logos you want. And in its configuration menu, the client will be able to customize the exterior color that borders the screen.





TECHNICAL SPECIFICATIONS

- Weight: 295 kg
- 27" customizable screen.
- Remote control and management through the Internet, securely.
- In-person access system for users with different levels of security.
- Contactless system.
- Automatic and manual machine prize payment management.
- Compatible with betting systems and jackpots.
- Security lock with 5 locking points.
- Personalization of digital image on screen + machine plotting.
- JCM iPRO with recycler
- TITO system.
- PULOON up to 6000 bills with 4 different denominations.
- Ticket and receipt printers.
- Currency system of 600 - 1500 - 8000 units. (Capacity according to model).



JACKPOT CONTROLLER SYSTEM

JACKPOT CONTROLLER SYSTEM

It is an [interconnection system](#) developed for casinos and salons to interconnect gaming machines to a common Jackpot system.

Our system has the technology to [support the amount of Jackpots that the operator requires](#) as well as their [management in terms of the growth system](#). of the prize and the range in which you want it to be made.

The [Jackpot system is fully configurable](#) from the beginning of its installation and then during the course of it. It has the [possibility of configuring a value of start, the value of the prize, and this is completely customizable independently for each Jackpot](#), in the case of having several prizes at the same time.

The interconnection system is divided into [2 parts Hardware](#). One of them is installed in [the gaming machine that the operator wishes to participate and add to the Jackpot prize](#) (it obtains accounting through the SAS system or mechanical counters), and the other, a [central PC that will be the controller of all the machines](#) and who will manage the luck of the Jackpots and the control of what is played per machine.

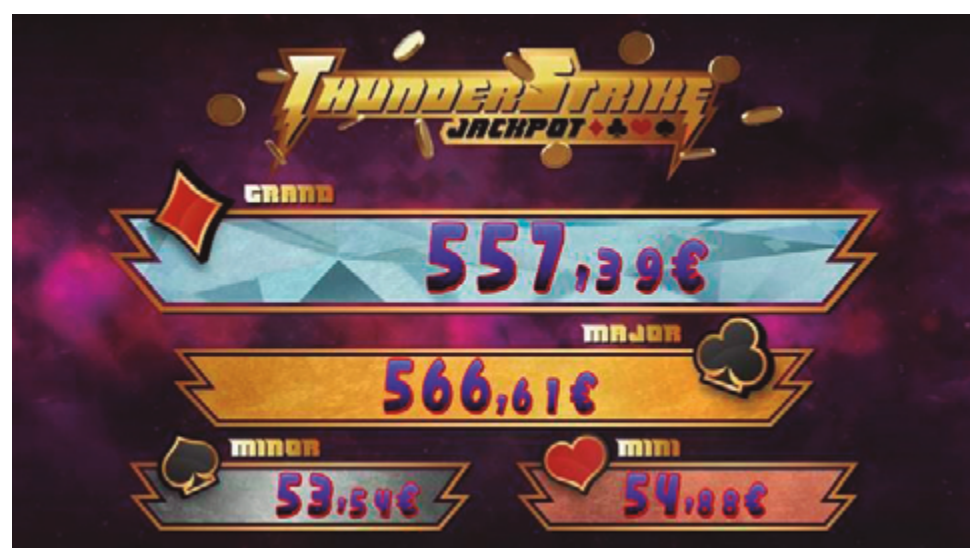


The system has a [data and information storage system](#), where the operator can consult through a web page previously configured for it ([WebReporting](#)), [the counters of each terminal or the historical prizes \(Jackpots\)](#) delivered for operator analysis.

When accessing, you will have a [central panel with all the terminals connected to the system and all the information of each](#) such as; Name and description of the machine, serial number, location, installed system version, among others.

Additionally, you will have a series of tools for each of the terminals you wish to analyze. These tools range from the respective [analysis of each machine, of a set of selected machines, or the entire park that is available and connected to the system.](#)

Our *Jackpot* system has two name and graphic options, *Atila Gold* and *Thunder Strike*. It can be viewed on screens through a PC video signal controller, the graph where the growth of the prizes established according to the operator's requirements will be displayed. Using the Hardware that is connected to each terminal, you can optionally display these contents in a Topper Sign in the cabinet itself.



PRIZE VIDEOS

The *Jackpot* system has *automated animation videos* where when leaving the selected prize will begin its automatic reproduction on all the screens that are connected to the system and to the room. These videos will be previously configured together with the entire system according to the operator's requirements.





READY2B

Ready2B is an element that [allows the adaptation of any game of chance in Spain or in the country where it is required](#), to the current legislation of a specific autonomous community, state or province. For the case of Spain, each autonomous community has its own gambling laws concerning any machine that allows players to win cash prizes.

Ready2B allows to adapt this type of games to the mentioned laws.

The system consists of [converting the user's credits or cash into tokens that can be used to play the game of chance](#) and, subsequently, [converting the remaining tokens or those obtained as prizes in the game into cash](#).

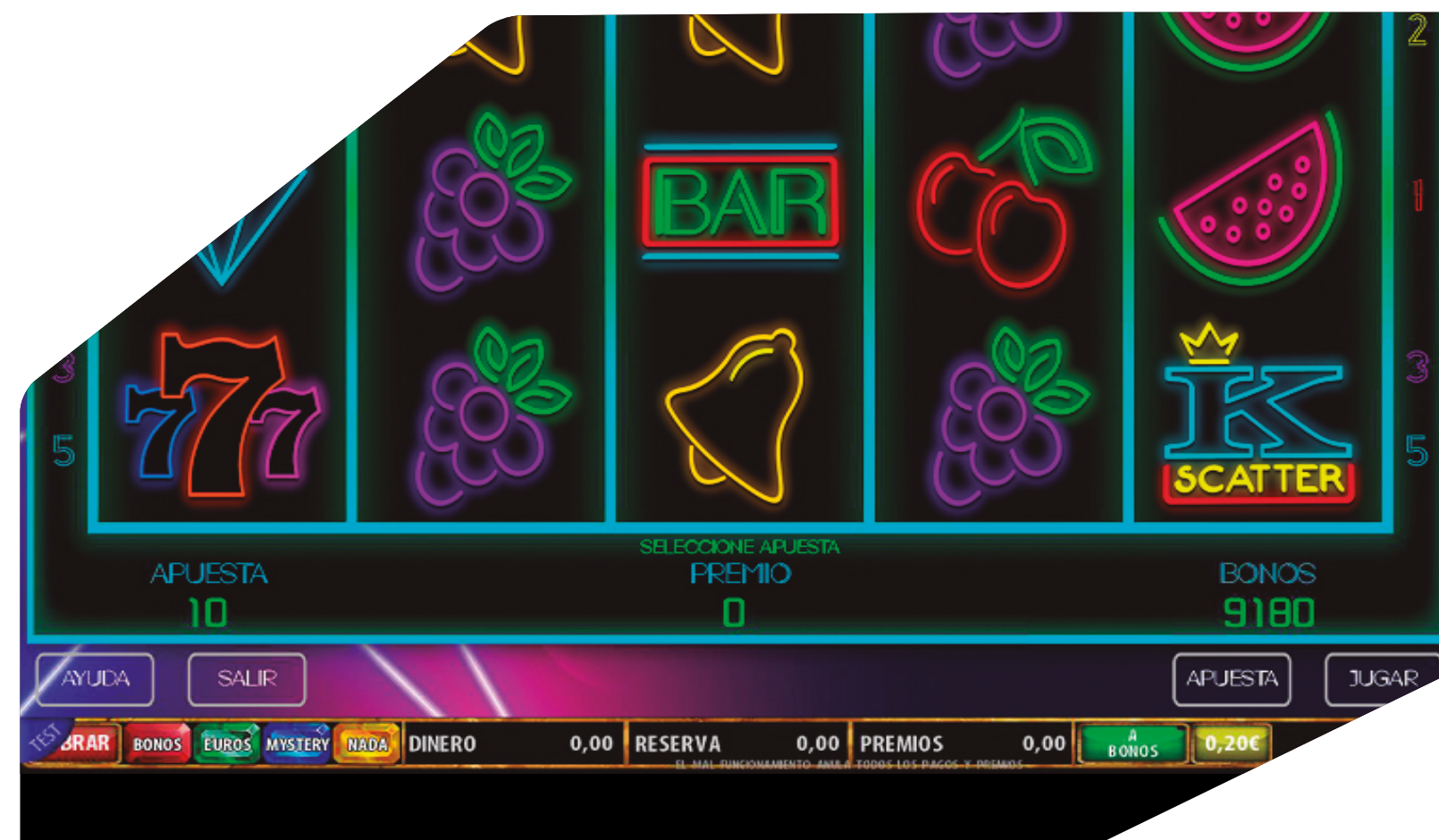
The conversion from tokens to cash and vice versa [is done in accordance with the current laws that each jurisdiction](#), according to its law, applies with respect to type B gaming machines.

Ready2B consists of a computer and/or [software that controls the whole system](#), a Contactless card reader that allows the technical team to perform the necessary management and configuration, [access to a touch screen with which the user can interact and finally](#), a set of peripherals that make up the cash in and cash out system, game buttons and counters.



The elements that can be displayed on the touch screen and that allow interaction with the device are shown below.

- Token/Euro/Mystery/Nothing lights
- Credit meter (CRÉDITOS)
- Reserve meter (RESERVA)
- Bank meter (BANCO O PREMIOS)
- Play (Autoplay) (JUGAR)
- Bet (€0.20/€1/other) (APUESTA)
- Collect (COBRAR)



FUNCTIONALITIES

The Ready2B API call by the game allows the game to [implement the necessary functionalities for the integration of the R2B system](#). The input of money, the output of money from the game or cashing out, the query of the game status, the modification of the game status and the reset of the game memory.

Also the control of certain hardware that can be optionally supplied by the [R2B system](#) such as lights and button panel.

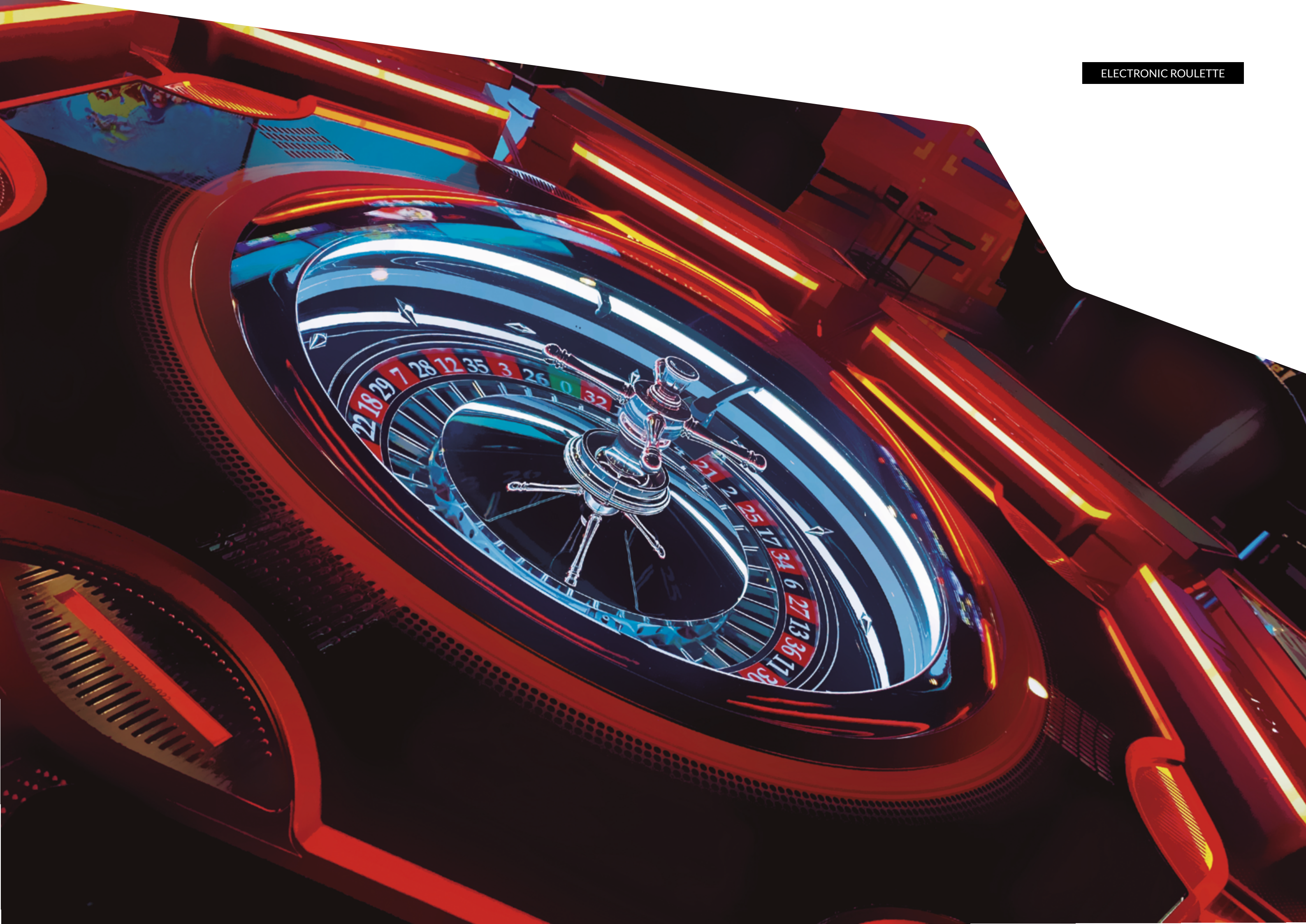
R2B [obtains all accounting information required by the operator](#). It doesn't matter what the Casino/Internet game does. The actual accountants that an operator will need are handled by R2B.

EXTERNAL JACKPOTS

The [external jackpots](#) functionality allows the game to be able to [receive information regarding the external jackpots system](#). The game will be notified of value updates, format and possible hits that occur.

The system [manages the prizes and contributions automatically](#) without the game having to take any action on the information it receives.





ELECTRONIC ROULETTE

A product thought and designed for players who seek excellence. Avant-garde technology to ensure reliability and maximum performance.

- Bet on different balls in the same game.
- Multiple Jackpots in the same game, in the same bet.
- Personalization of funds.
- Game privacy mode.
- Game pause mode.
- Limits of bets per maximum amount of chips.
- Analytical game mats.
- Multiple screens to enhance the gaming experience.
- Live camera system on player and main screen.
- Personalized croupiers.
- High definition graphics and touch system with surround sound to improve the gaming experience.





SOFTWARE UP TO 4 VIRTUAL ROULETTES

Our exclusive configuration software has the ability to configure up to four virtual roulette wheels displayed on a high definition screen.



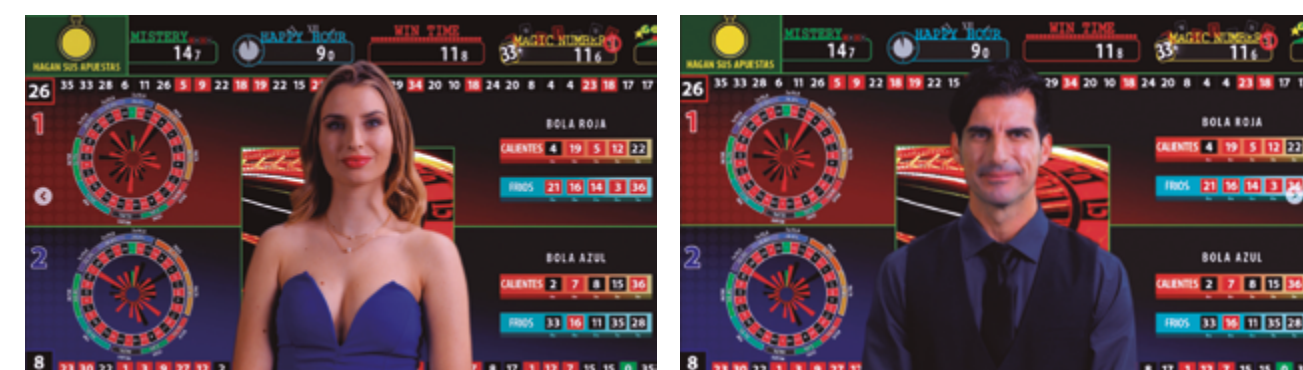
DIFFERENTIATED STATISTICAL QUERIES BY BALL

Our software configuration allows the generation of [different statistics and analysis per ball](#) in the case of having several in the same game, allowing the player to view each of them on the same screen. Selecting the ball you want to have information on, the statistics shown is the [analysis of the last 17 games](#), and in each of them you can view the main indicators of the game.

PERSONALIZED CROUPIERS

The roulette software has available by default, to configure [3 different types of croupier](#).

They are available in the Host's configuration, and once selected, they will call the results of each bet, offering the player an improved [gaming experience and realism](#).



EVOLUTION MODEL



- 5 positions
- Length: 2620 cm
- Width: 2130 cm
- Height: 1806 cm



- 10 positions
- Length: 3490 cm
- Width: 2685 cm
- Height: 1020 cm

EVOLUTION



- 8 positions
- Length: 2620 cm
- Width: 2620 cm
- Height: 1020 cm



- 12 positions
- Length: 4355 cm
- Width: 2685 cm
- Height: 1020 cm



SMI-P63 ROULETTE

COMPACT MODEL



- 4 positions
- Length: 2100 cm
- Width: 1870 cm
- Height: 1025 cm



- 8 positions
- Length: 2100 cm
- Width: 2100 cm
- Height: 1025 cm



- 10 positions
- Length: 2150 cm
- Width: 2835 cm
- Height: 1025 cm



- 6 positions – Sign option
- Length: 2100 cm. – 2080 cm
- Width: 1870 cm. – 2040 cm
- Height: 1025 cm. – 1950 cm



- 12 positions
- Length: 2150 cm
- Width: 3590 cm
- Height: 1025 cm





BLACKJACK

BLACK JACK



BLACK JACK

Our commitment to bring one of the oldest and most successful games in casinos around the world to your game room.

BLACKJACK

For new players, it incorporates help that facilitates quick and enjoyable learning; for experts, multi-hand option and simultaneous tables.

- Configurable up to 4 simultaneous tables.
- Additional bets.
- High quality electronic peripherals.



GAME FEATURES

- Simultaneous game up to 4 tables.
- Possibility of enabling between 2 and 4 game tables.
- Possibility of adapting the black jack rules of each game table.
- Additional bets: Lucky Aces, 21+3, Lucky Lucky, and banker bet.
- TITO Ready.
- Fast and dynamic game that adapts to the speed of the player.



TECHNICAL SPECIFICATIONS

- 65" main screen.
- 21.5" resistant secondary screens of projected capacity technology.
- Recycling wallet.
- USB charger.
- TITO Printer.
- Measurements: 1730 x 2150 x 2020 mm.
- Weight: 560 kg.

Virtual croupier option to sing the results

This new option is available to the operator so that they can [configure 3 different dealers available in the Host](#), where they will announce the results of each bet and offer the player an improvement in the gaming experience and realism.





ATILA
GOLD

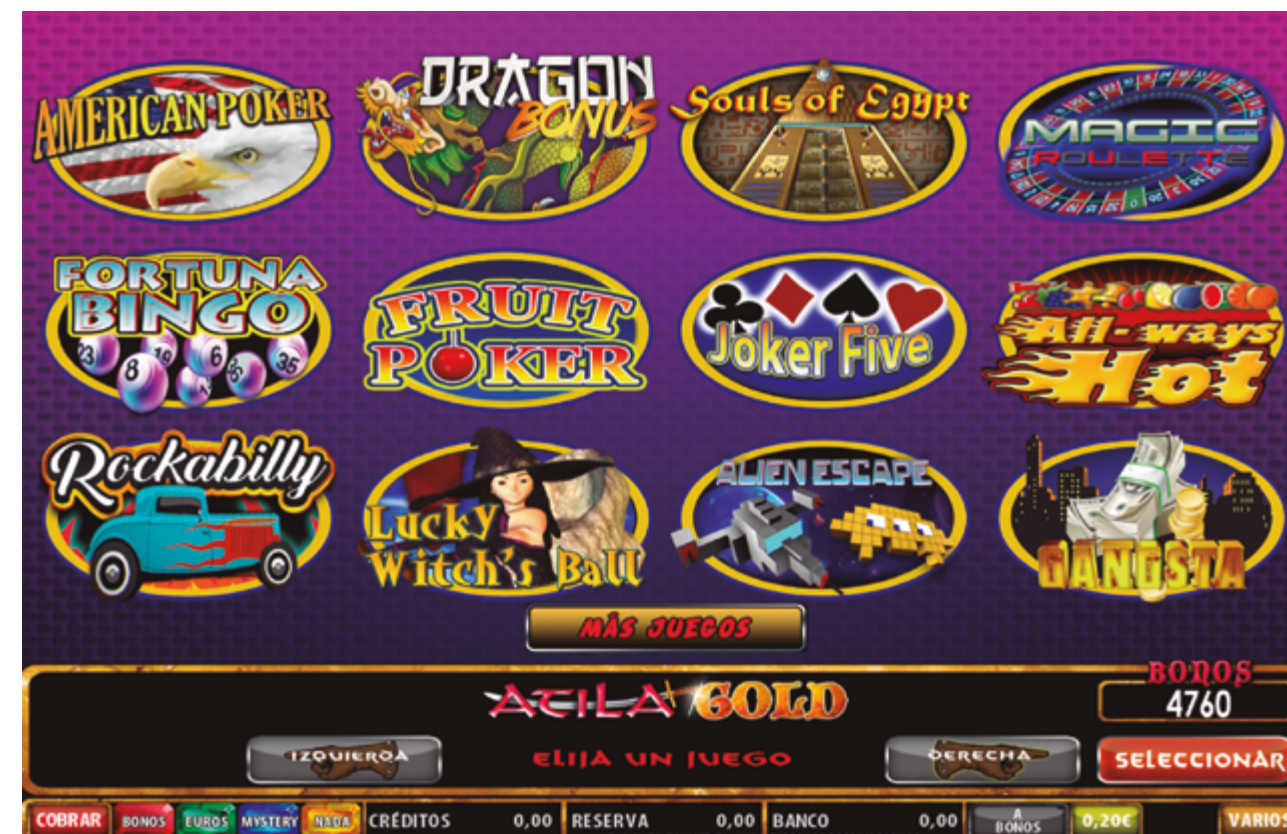
The logo features the word "ATILA" in large, red, 3D block letters with a white outline. A sword with a silver blade and a brown hilt is positioned horizontally behind the letters. Below "ATILA", the word "GOLD" is written in large, golden, textured letters with a white outline and a glowing effect. The background is a purple-to-dark-purple gradient with a subtle grid pattern.

ATILA GOLD

Atila Gold is a multigame product for slot machines, which has a classic style game kit with 3 - 4 and 5 lines.

It has 20 different games for the player to play, keeping their credits as they switch between them.

It works with the R2B device for the insertion and collection of credits.



OPTION 1. Self-made online slot machine in two models available.

- Dual 21" high-resistance touch screen.
- Dual 23" high-resistance touch screen.
- SIGN option with Jackpot Controller system.
- TITO Printer Option - Monética - Bill acceptor.



OPTION 2. R2B Device KIT, with built-in Atila Gold games.

- Support for SAS – Dual SAS – Triple SAS.
- Keypad Control
- Availability for legal tender coins.
- Bill acceptor.
- Push buttons
- Counters
- TITO printer
- Possibility of interconnecting with Jackpot Controller system. Compatibility and control up to 3 screens simultaneously.

GAMES

Atila Gold has 20 different games of 3 – 4 and 5 reels. Each game has a help menu, where the player can access to understand and know the rules of each game.



Online Market

SLOTME

MEMONEY

WEB REPORTING



Slotme

SLOTME

SLOTME EXPERIENCE

Slotme is a [web environment application](#), intended for both the operator and the player where the latter, by prior registration on the [slotme.es](#) site, [can access multiple customization options as well as different roulette game modes](#).

It does not apply to online roulette games, but is aimed at [face-to-face game roulette within a room or Casino](#), where in turn the operator can offer the player a different gaming experience, within the classic game of roulette.



SLOTME STORE

Once entered in this section, the user [will have a wide variety of items](#) with the option to purchase according to their preferences.

Slotme has a [store mainly divided into 3 sections](#).

- Purchase of SLOTS.
- Participation in Tournaments.
- Roulette customization.



Slotme offers a unique gaming experience, with customization of your own board, tournaments and game strategies. All in one place.

A platform oriented to the new generations, but with the ease and utility that involves both new players and the most conservative ones.



Evolution roulette is still an innovative product, maintaining the essence of the classic game of roulette. Where by merging with Slotme, it opens a world to a new experience and way of playing.



MEMONEY

memoney

MEMONEY

Memoney is a system that [allows money transfers between an ATM or bank entity and a terminal of a gaming machine](#), by means of a smartphone, using QR codes.

Allows you to [transfer money in different formats](#) such as cash, tickets, wallet cards, online accounts, banking... between you and the game terminal of the machine you are on. It is possible to make both [inputs and outputs of money](#).

A [Ticket In/Ticket Out](#) system, which allows the [collection and payment of prizes through tickets](#) at the corresponding ATMs, as well as the comfort of a Cashless system, through which cash payments are made through electronic and digital means.

Possibility of [checking the balance of your money anywhere](#), without having to be in person at the gaming venue or having to accumulate tickets or cards of any kind.

It does not require registration by the user, since the tool has a unique [number on their mobile and that only the change machine identifies](#). Although you have the option of a minimum account registration, if the user wishes to establish a [higher level of security](#), entering your name, email, and a 4-digit code that you must use it for every transaction you want to make.

For the service to work correctly, when entering the site, it will require that the mobile have the [location activated to identify its location](#) and relate it to the nearest salon or wherever you are.

memoney

CHARACTERISTICS AND FUNCTIONALITIES

1. Deposit from Bank

Deposit cash from a bank account or payment system.

When entering the memoney.es site, if the phone does not have this option activated, the user will be asked to activate their location, where the system will automatically allow the user to confirm the game room where he is.

2. Return to Bank

Return cash to a bank.

In the same way that we have carried out the previous steps to deposit money to our memoney account, we will do it to return the money that we have in our account, but to the bank using the same method that we have selected at the time.

3. Recharge or charge at cashier

Top up or collect an amount in memoney through the ATMs available in the gambling venues

The user can introduce cash in the ATMs located in the rooms game, and transfer this cash to your memoney account.

4. ATM payment

Collect an amount of money in memoney from an ATM.

In the same way that we have detailed in the previous case, the user will also have the possibility of transferring the money that you have in your memoney account to the cashier, to get the money back in cash.

5. Insert money in a game terminal

Insert money into a game terminal directly from memoney.

With a minimum amount in his memoney account, the user will be able to use your money to play in the terminals you want.

 <p>Depósito desde Banco</p>	 <p>Devolución a Banco</p>	 <p>Recarga o Cobro en Cajero</p>	 <p>Introducir en Terminal de Juego</p>
<p>Depositar efectivo desde una entidad bancaria</p> <p>Selecciona una cantidad para depositarla desde tu entidad bancaria en memoney, y disponer de ella cuando lo desees.</p>	<p>Devolver efectivo a una entidad bancaria</p> <p>Selecciona una cantidad en memoney y retórnala a tu entidad bancaria.</p>	<p>Recargar o cobrar efectivo en un cajero</p> <p>Recarga o cobra una cantidad en memoney mediante los cajeros disponibles en los locales de juego.</p>	<p>Introducir efectivo en un terminal de juego</p> <p>Introduce una cantidad en el terminal de juego en el que te encuentras directamente desde memoney.</p>
<p>¿Cómo depositar una cantidad desde banco?</p>	<p>¿Cómo devolver una cantidad a banco?</p>	<p>¿Cómo recargar o cobrar una cantidad en cajero?</p>	<p>¿Cómo introducir una cantidad en terminal?</p>

REPORTING

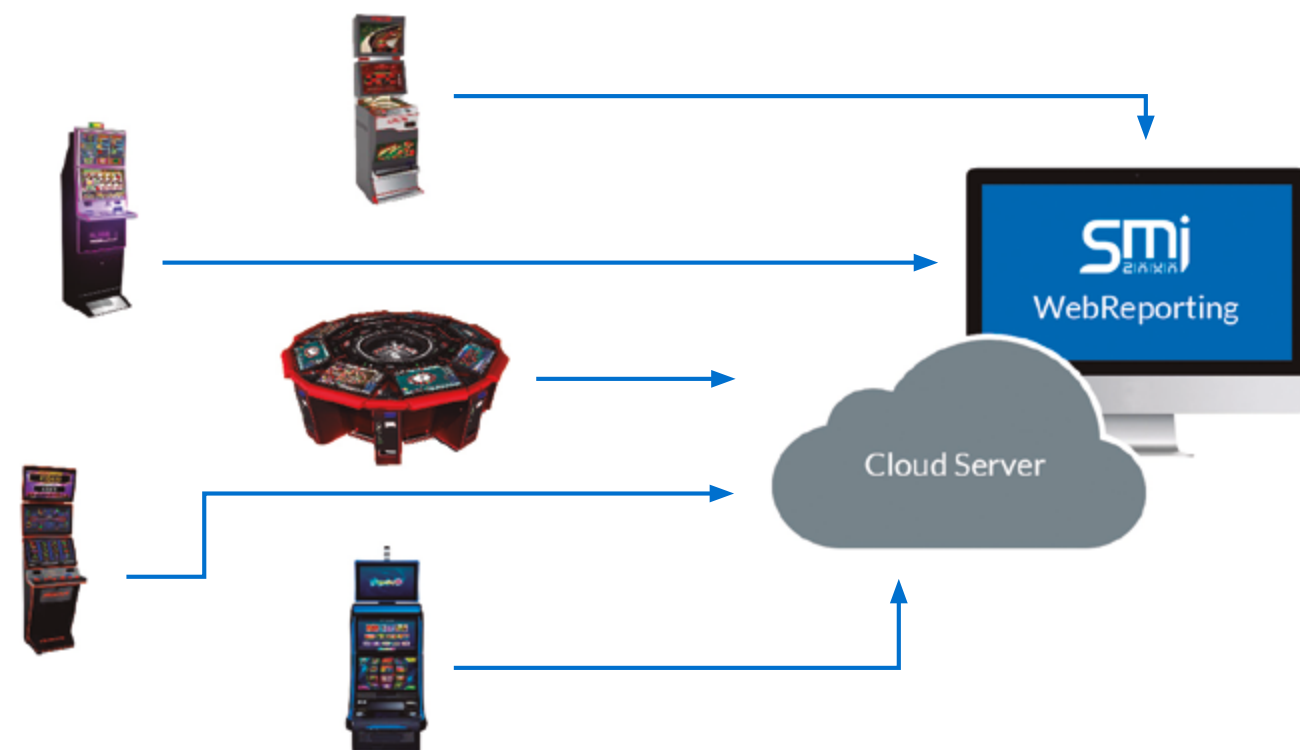


INTRODUCTION

Our system allows to [collect the accounting and alarms](#) of any machine [SAS-compliant](#) electronic arcade game (EGM).

All this data is sent to the cloud server in real time for monitoring and report generation.

Our [IOT board allows you to capture data without interfering with the use of the SAS](#) connection of the current gaming machine. It is completely transparent to the existing monitoring system.



USE

The main objective is to [capture and record all the information](#) without the need to work with manufacturers of EGM's or manufacturers of machine monitoring systems existing recreational.

It has a [BigData processing](#) that allows [monitoring the behavior of the EGM by the client or the administration](#), where all the information is available through a database accessible in the cloud, and allows the [creation of reports and calculations of data](#).





Soluciones Mecánicas Integrales 2000 S.L. (SMI2000), applies a policy of continuous development of its products and reserves the right to make changes in specifications, spare parts and prices, without prior notice. The information that appears in this catalog should serve as a simple reference. Although SMI2000 has made every effort to ensure that all information is accurate at the time of publication, it is recommended that you check with the Company to see if any information has been updated. Due to limitations of the printing process, colors reproduced in this catalog may vary slightly from actual colors and materials.

Made in Catalonia.

2024

Soluciones Mecánicas Integrales 2000, S.L.

📍 Av. Ragull 50, 2ª 1º 08173 Sant Cugat del Vallès, Barcelona, Spain

☎ Tel. +34 935 878 744 - Fax. +34 936 754 547

✉ info@smi2000.net

🌐 www.smi2000.net